

**2019**

Santa Clara County  
Law Enforcement  
Agencies

ANNUAL  
CRIME  
STATISTICS

**Santa Clara County Law Enforcement Agencies**

**Part 1 Crime Totals**

**Annual Report - 2019**

<b>City or Town</b>	<b>Homicide</b>	<b>Rape</b>	<b>Robbery</b>	<b>Assault</b>	<b>Burglary</b>	<b>Theft</b>	<b>Vehicle Theft</b>	<b>Arson</b>	<b>2018 Totals</b>	<b>2019 Totals</b>	<b>Change %</b>
<b>Campbell</b>	0	22	20	296	209	987	158	13	1,754	1,705	-2.8
<b>Cupertino</b>	1	6	14	130	175	803	40	1	1,145	1,170	2.2
<b>Gilroy</b>	4	28	56	444	149	834	306	20	2,188	1,841	-15.9
<b>Los Altos Hills</b>	0	0	0	12	29	38	0	0	70	79	12.9
<b>Los Gatos</b>	0	3	6	3	57	59	339	na	535	467	-12.7
<b>Milpitas</b>	2	18	48	496	203	1,791	203	2	2,407	2,763	14.8
<b>Morgan Hill</b>	2	3	14	182	102	507	94	0	952	904	-5.3
<b>Mountain View</b>	0	16	49	409	321	2,029	112	6	2,609	2,942	12.8
<b>Palo Alto</b>	1	10	46	215	179	1,724	83	8	1,760	2,266	28.8
<b>San Jose</b>	32	671	1339	9,367	4,114	14,924	6,126	135	36,723	36,708	0.0
<b>Santa Clara</b>	1	35	73	638	363	4,013	372	18	4,412	5,513	25.0
<b>Saratoga</b>	0	4	2	47	104	113	14	5	298	289	-3.0
<b>Sunnyvale</b>	0	37	84	482	458	2,598	324	32	3,117*	4,015	28.8
<b>Totals</b>	<b>43</b>	<b>853</b>	<b>1,751</b>	<b>12,721</b>	<b>6,463</b>	<b>30,420</b>	<b>8,171</b>	<b>240</b>	<b>57,970</b>	<b>60,662</b>	<b>4.6</b>

\*\*\*Assault totals include both simple and aggravated.

\*Sunnyvale's 2018 total was corrected after last year's annual report to reflect more accurate theft numbers

**Santa Clara County Law Enforcement Agencies**

**Crime Rate Comparison**

**Annual Report – 2019**

<b>City or Town</b>	<b>Population</b>	<b>Officers</b>	<b>Officers Per 1000</b>	<b>Crime Rate Per 100,000 Population</b>
<b>Campbell</b>	42,466	41	0.97	4,014
<b>Cupertino</b>	58,302			2,006
<b>Gilroy</b>	55,928	64	1.14	3,291
<b>Los Altos</b>	30,531	32	1.05	258
<b>Los Gatos - Monte Sereno</b>	30,988	39	1.26	1,351
<b>Milpitas</b>	76,231	88	1.15	3,624
<b>Morgan Hill</b>	45,135	40	0.89	2,002
<b>Mountain view</b>	81,992	96	1.17	3,588
<b>Palo Alto</b>	67,082	80	1.19	3,377
<b>San Jose</b>	1,043,058	1,150	1.10	3,519
<b>Santa Clara</b>	129,488	159	1.23	4,257
<b>Saratoga</b>	29,926			
<b>Sunnyvale</b>	155,567	201	1.29	2,580

The crime rate provides a measure of the severity of a crime problem within a given jurisdiction. The crime rate is based on the number of crimes reported for each 100,000 population. The rate is calculated by multiplying the number of Part I offenses by 100,000. That number is then divided by the population of the service jurisdiction

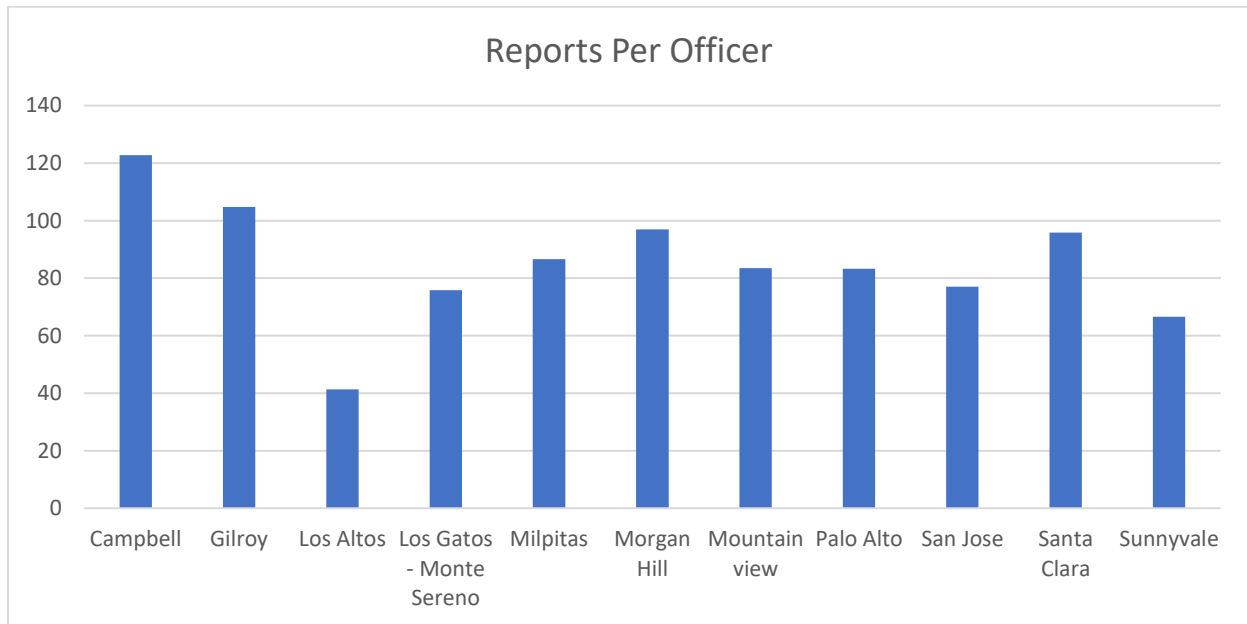
Source of Population Numbers: U.S. Census Bureau website

**Santa Clara County Law Enforcement Agencies**

**Reports Per Officer**

**Annual Report – 2019**

<b>City or Town</b>	<b>Reports per Officer</b>	<b>Reports</b>	<b>Officers</b>
<b>Campbell</b>	123	5,033	41
<b>Cupertino</b>		58,302	n/a
<b>Gilroy</b>	105	6,702	64
<b>Los Altos</b>	41	1,321	32
<b>Los Gatos - Monte Sereno</b>	76	2,955	39
<b>Milpitas</b>	87	7,623	88
<b>Morgan Hill</b>	97	3,879	40
<b>Mountain view</b>	84	8,018	96
<b>Palo Alto</b>	83	6,662	80
<b>San Jose</b>	77	88,634	1,150
<b>Santa Clara</b>	96	15,245	159
<b>Sunnyvale</b>	67	13,372	201

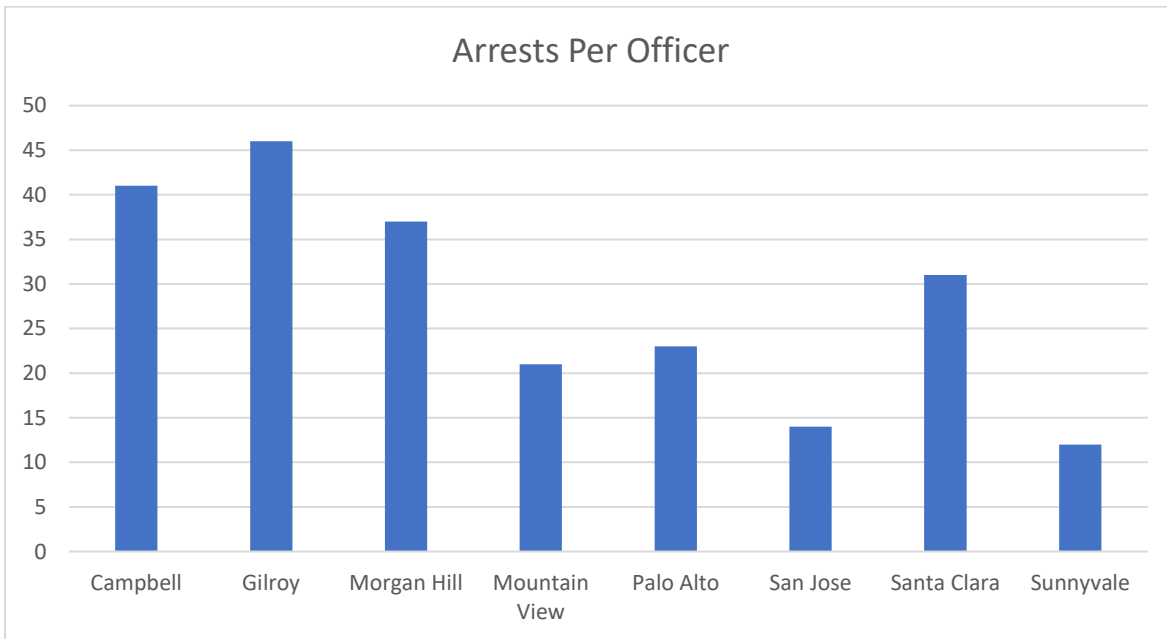


**Santa Clara County Law Enforcement Agencies**

**Arrests Per Officer**

**Annual Report – 2019**

<b>City or Town</b>	<b>Arrests Per Officer</b>	<b>Arrests</b>	<b>Officers</b>
<b>Campbell</b>	41	1,712	41
<b>Gilroy</b>	46	2,978	64
<b>Morgan Hill</b>	37	1,507	40
<b>Mountain View</b>	21	2,064	96
<b>Palo Alto</b>	23	2,185	92
<b>San Jose</b>	14	17,049	1,150
<b>Santa Clara</b>	31	3,502	110
<b>Sunnyvale</b>	12	2,500	201

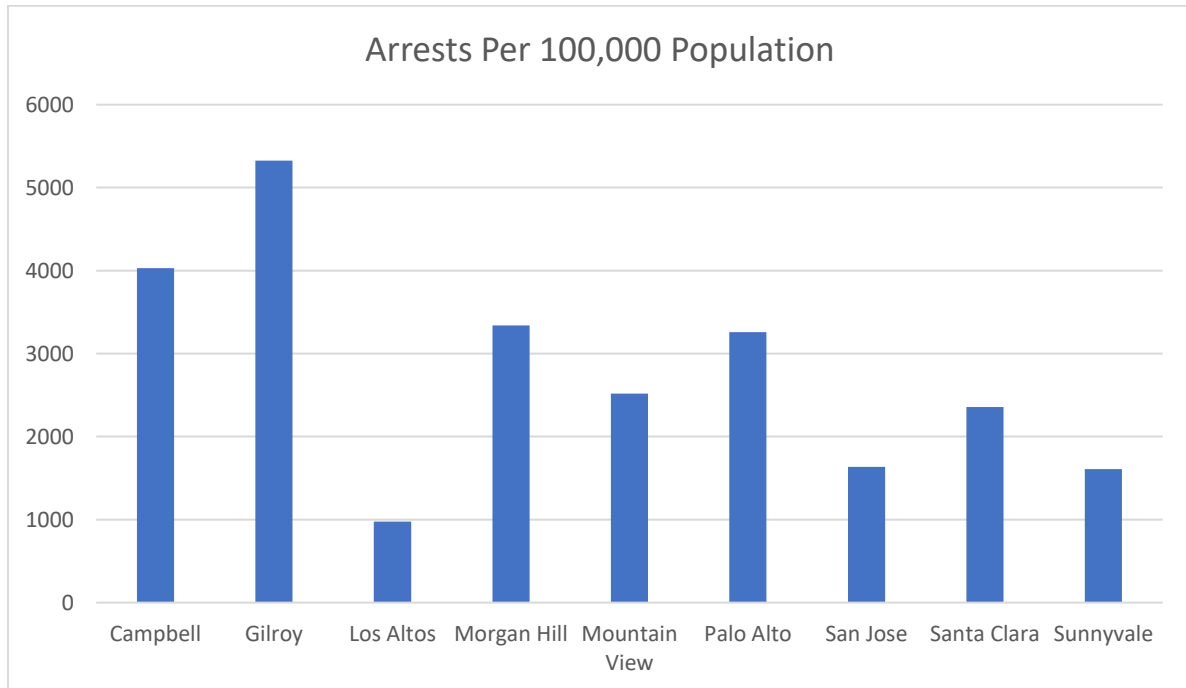


**Santa Clara County Law Enforcement Agencies**

**Arrests Per 100,000 Population**

**Annual Report – 2019**

<b>City or Town</b>	<b>Arrests Per 100,000 Population</b>	<b>Arrests</b>	<b>Population</b>
<b>Campbell</b>	4,031	1,712	42,466
<b>Gilroy</b>	5,324	2,978	55,928
<b>Los Altos</b>	976	298	30,531
<b>Morgan Hill</b>	3,338	1,507	45,135
<b>Mountain View</b>	2,517	2,064	81,992
<b>Palo Alto</b>	3,257	2,185	67,082
<b>San Jose</b>	1,634	17,049	1,043,058
<b>Santa Clara</b>	2,356	3,052	129,488
<b>Saratoga</b>			29,926
<b>Sunnyvale</b>	1,607	2,500	155,567

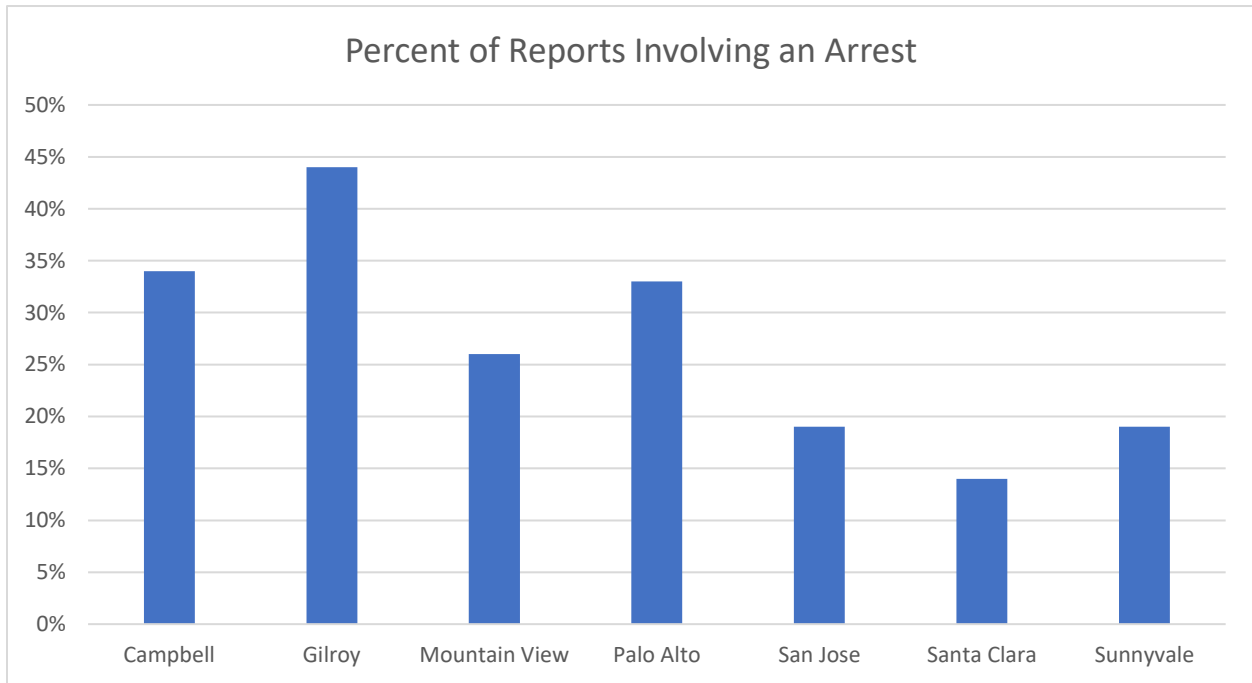


**Santa Clara County Law Enforcement Agencies**

**Percent of Reports Involving an Arrest**

**Annual Report – 2019**

City	Percent of Reports Involving an Arrest	Reports	Arrests
Campbell	34%	5,033	1,712
Gilroy	44%	6,702	2,978
Mountain View	26%	8,018	2,064
Palo Alto	33%	6,662	2,185
San Jose	19%	88,634	17,049
Santa Clara	20%	15,245	3,630
Sunnyvale	19%	13,372	2,500

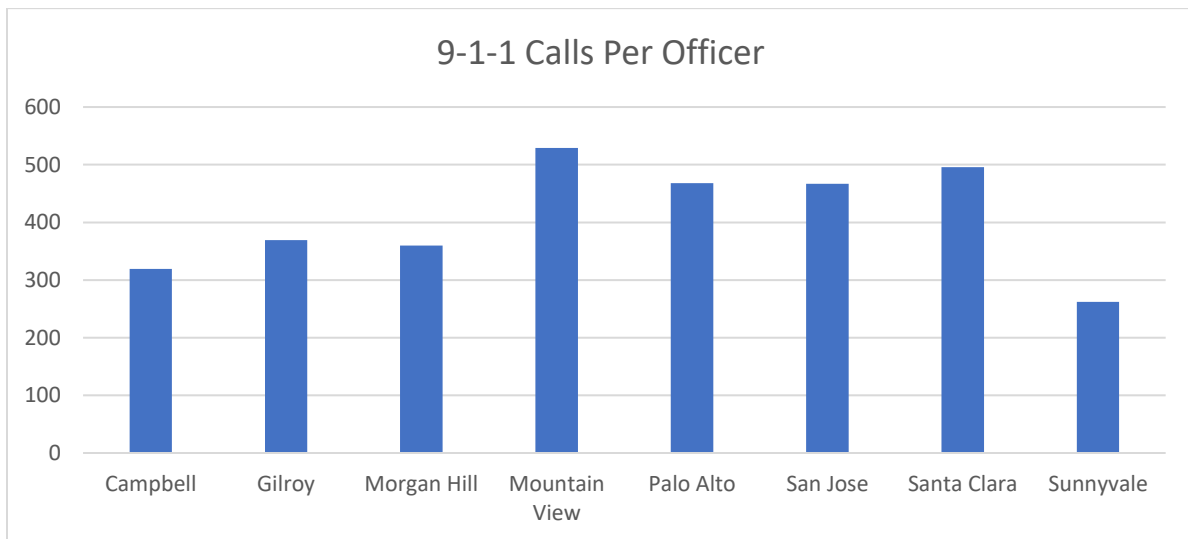


**Santa Clara County Law Enforcement Agencies**

**9-1-1 Calls Per Officer**

**Annual Report – 2019**

<b>City or town</b>	<b>9-1-1 Calls per officer</b>	<b>9-1-1 Calls</b>	<b>Officers</b>
<b>Campbell</b>	319	13,105	41
<b>Gilroy</b>	369	23,618	64
<b>Morgan Hill</b>	360	14,396	40
<b>Mountain View</b>	529	24,349	96
<b>Palo Alto</b>	468	37,452	80
<b>San Jose</b>	467	537,079	1,150
<b>Santa Clara</b>	496	54,540	110
<b>Sunnyvale</b>	262	41,611	201





**Santa Clara County Law Enforcement Agencies**

**Arrests/9-1-1 Calls/Reports/Crime Rates**

**Annual Report – 2019**

<b>City or Town</b>	<b>Arrests</b>	<b>9-1-1 Calls</b>	<b>Reports</b>	<b>Crime Rates</b>
<b>Campbell</b>	1,712	13,105	5,033	4,014
<b>Cupertino</b>				2,006
<b>Gilroy</b>	2,978	23,618	6,702	3,291
<b>Los Altos</b>	298	5,703	1,321	258
<b>Los Gatos - Monte Sereno</b>	950	10,249	2,955	1,351
<b>Milpitas</b>	1,987	23,026	7,623	3,624
<b>Morgan Hill</b>	1,507	14,396	3,879	2,002
<b>Mountain view</b>	2,064	24,349	8,018	3,588
<b>Palo Alto</b>	17,049	37,452	6,662	3,377
<b>San Jose</b>	17,049	537,079	88,634	3,519
<b>Santa Clara</b>	3,630	54,540	25,245	4,257
<b>Saratoga</b>				965
<b>Sunnyvale</b>	2,500	41,611	13,372	2,580