

Active Shooter Response Training



Santa Clara County
Police Chief's Association

TRAINING OBJECTIVES

- Offer strategies to prevent and prepare for a potential Active Shooter incident
- Provide options to enhance survival when confronted with an Active Shooter
- Describe actions needed to safely interact with the responding police officers

Definition of an Active Shooter



An Active Shooter is a subject or subjects actively engaged in killing or attempting to kill people in a confined and populated area; Active Shooters primarily use firearms and there is no pattern or method to their selection of victims

Active Shooter Events



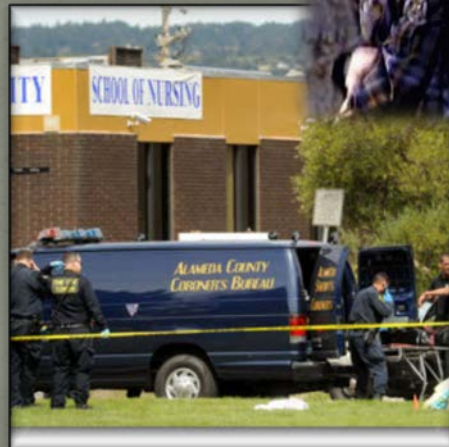
- Unpredictable
- Evolve quickly
- Continue until stopped by law enforcement, suicide or other intervention

The Tragic Reality

Columbine High School



Virginia Tech University



Oikos University



Sandy Hook Elementary School

It happens frequently (and continues to happen...)

- Columbine High School, Colorado
- Pennsylvania Amish School
- Virginia Tech University
- Fort Hood, Texas
- Lehigh Cement Plant, Cupertino, CA
- Oikos University, Oakland, CA
- Aurora, Colorado
- Newtown, Connecticut
- Santa Monica Community College, CA

Lessons Learned:

- Taking action makes a difference
- NEUTRALIZING THE THREAT IS NECESSARY TO SAVE LIVES
- Active Shooter Events are often over within 10-15 minutes (*before* the police arrive in half the cases)
- Response to minimize or eliminate the threat will need to be taken by YOU

Prevention & Detection of Active Shooter Events

- Harden the target (security upgrades)
 - ❖ Video surveillance of open areas
 - ❖ Peep holes on doors
- Report suspicious activity to police and your administration
 - ❖ Implement an anonymous reporting system
 - ❖ Consider a multi-disciplinary team to assess potential threats
- Train and prepare!
 - ❖ A survivor mindset is critical

Red Flag Indicators

Although no single set of warning signs are reliable predictors of an Active Shooter, there can be “red flags”.

A “red flag” indicator is a questionable, suspicious or inappropriate behavior that may be presented through someone’s appearance, spoken or written words, or specific actions.

Examples of **Red Flag** indicators:

- Behaviors which regularly interfere with classroom environment
- Overly aggressive behavior or threats toward others
- Poor decision-making and coping skills
- Low frustration tolerance; overreaction to circumstances; anger management problems
- Notable change in behavior or appearance
- Writings, comments or social network postings endorsing violence; an unusual interest in violence

Run, Hide, Defend: Options for surviving an Active Shooter Event

- Whether in Newton, Connecticut or tornado-ravaged Oklahoma, teachers and school staff have become the first (and last) line of defense for our children

RUN = Evacuate

- Decide if you can escape safely
- If it is safe, run as fast as you can away from the direction of the gunshots
- DO NOT stop running until you are far away from the area
- Leave your belongings behind
- Help others escape, if possible
- Prevent individuals from entering the area, but not at the risk of your own safety

RUN (other considerations)

- Get away from the threat and identify a safe place
- When fleeing from danger, keep buildings, cars or other objects between you and the threat
- Do not attempt to move wounded people
- Call 911 when safe

HIDE = Lockdown

- If escape is not feasible; hide and create a stronghold
- Lock the door, turn off the lights and close the blinds
- Take cover behind large items
- Silence your cell phones and turn off vibrate mode
- Remain quiet
- Move away from doors and windows



Reinforce the locked doors with chairs, desks, and other items



Erect barricades on ALL of the doors

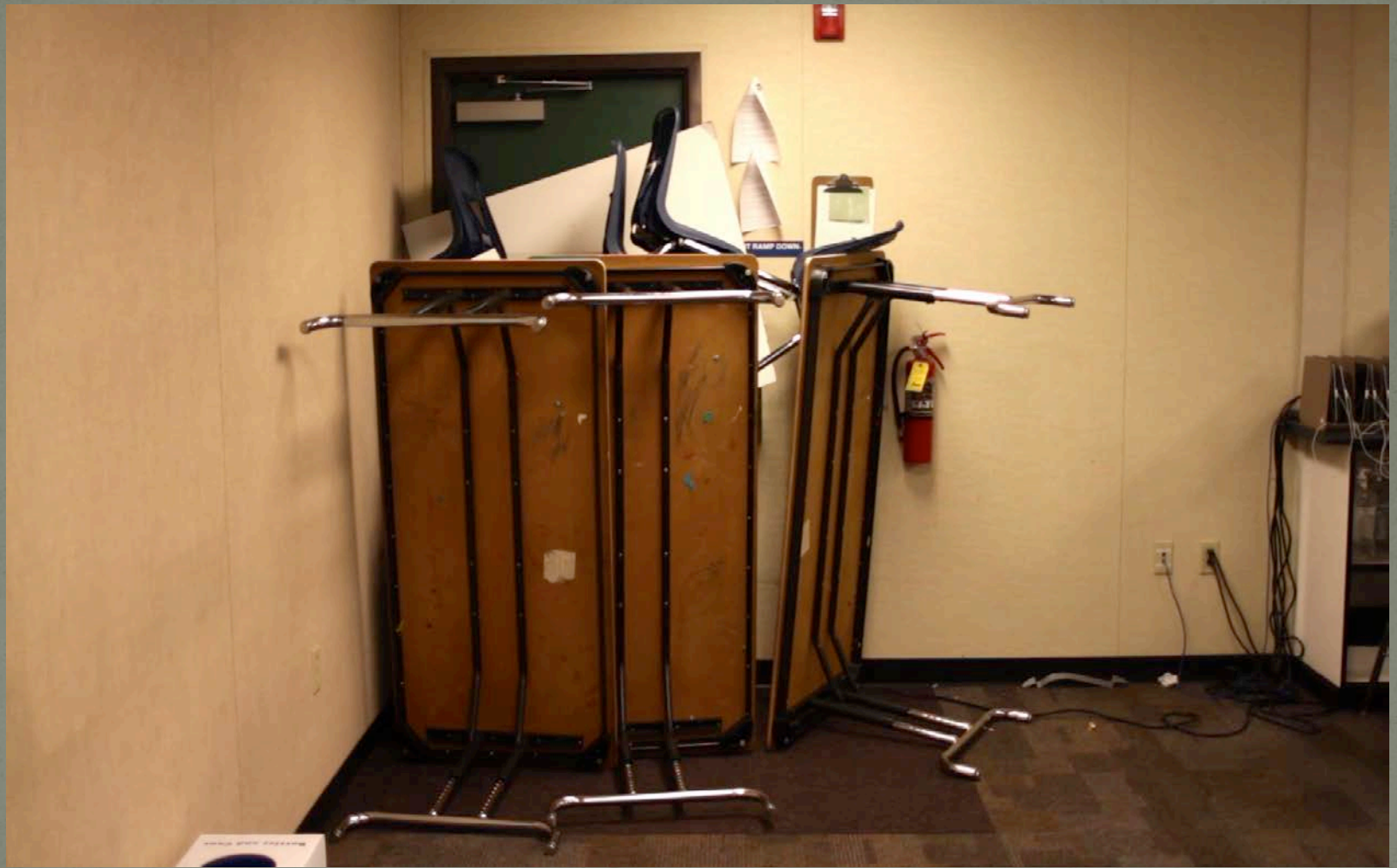


Fill in
the
voids

Suspect will take the Path of Least Resistance

Good example of a barricade





HIDE (other considerations)

- Call 911 when it is safe to do so
- Once you have secured the door do not open it for anyone. Police will enter the room when the situation is over.
- Prepare yourself mentally and physically for the possibility of engaging the shooter
 - ❖ Put yourself in a position to surprise the suspect(s) if they enter the room.

DEFEND = Fight for your Life

- This is a last resort
- Commit to your actions!
- Act as aggressively as possible
- Improvise weapons
- Attack in a group (Junior High & above)
- Yell and and make loud noises to disorient the shooter
- If possible, grab the shooter's limbs and head, take them to the ground and hold them there.









When police officers arrive on scene

- Their first priority is to eliminate the threat
- Officers will advance to the area where the last shots were heard
- Initial officers will not tend to injured victims nor stop to speak with you



Additional Officers and Rescue Teams

Officers may not be wearing traditional police uniforms

- Instead they may be in “tactical” gear with rifles, helmets and ballistic vests

To minimize risk, everyone must be treated as a suspect until the suspect is identified

- Officers will issue loud commands and may get physical



Reacting to Law Enforcement

- Remain calm
- DO NOT approach officers
- Follow all instructions by officers
- Put down any items and DO NOT pick up any weapons
- Raise hands and spread fingers
- Avoid quick movements
- Avoiding pointing, screaming or yelling at officers
- If you are barricaded in a room, DO NOT open door

Other Considerations



Be aware there may be situations where people:

- May have limited or no English proficiency
- May be hearing or sight impaired
- May be mobility impaired

Do the best you can to help without putting yourself at risk

Shelter in Place

Situations where there is no immediate threat to the school

- Dangerous incident in the surrounding neighborhood
- Dangerous incident at a nearby school
- Any situation where you feel keeping students inside is the safest alternative

Shelter in Place Considerations

- Lock all doors, close windows (no barricades)
- Remain inside; engage in normal indoor activities
- Keep movement outdoors to a minimum
- Use buddy system with at least one adult when leaving classroom
- Before leaving classroom, notify office or next door classroom
- If students are to be released; it should be by direct hand off at a location determined by the school administration
- School administrators may give the “All Clear” announcement
 - ❖ No special code

Activity: What Would You Do?

Instructions

Working as a team:

1. Look around the room. Consider what you would do in an active shooter situation and whether it would be better to Run (escape) or Hide (barricade)
2. Come up with a list of actions you would take to protect yourself and those around you
3. Select a spokesperson and be prepared to report back to the class in 5 minutes

Training Summary:

- Plan & prepare ahead of time
- Be aware of your environment
 - ❖ Always know your escape route
- Your survival options in an Active Shooter Event:
RUN, HIDE, DEFEND!
- Call 911 when it is safe to do so
- Never approach an officer during an active shooter situation

Questions or comments?

Sgt. Jason Pierce #3380

Ofc. Manny Vasquez #2629

Ofc. Ben Gonzalez #2704

Ofc. Catherine Velasquez #3465

San Jose Police Department

School Liaison Unit

408-277-5263